

RODAN+FIELDS® REDEFINE

AMP MD™ System
For Firmer-Looking Skin



RODAN+FIELDS®

Decide Today How Tomorrow Looks™

Young skin has healthy amounts of collagen and elastin fibers, keeping it firm and supple. Physiological changes, environmental factors (especially sun exposure) and detrimental lifestyle choices like smoking, all contribute to our skin's loss of these supportive fibers as we age. With a reduction of collagen and elastin, we see sagging, wrinkles and noticeably enlarged pores. Thankfully, the right skincare can help maintain skin's youthful appearance and defend against the effects of time and the environment. The end result: a visibly firmer, more radiant and flawless-looking complexion.

So start today. We are all aging all the time, but what that looks like is up to you.

Kathe Rodan M.D. Kathy Fields, M.D.

How Does the AMP MD™ System Work?

Take a firm position on aging skin with our patented REDEFINE AMP MD System. The noninvasive AMP MD Micro-Exfoliating Roller and REDEFINE Night Renewing Serum are clinically shown to safely and effectively amp up your daily skincare routine for a firmer, more youthful appearance. Recommended for use with REDEFINE Regimen for best results. Used as directed, the AMP MD System:

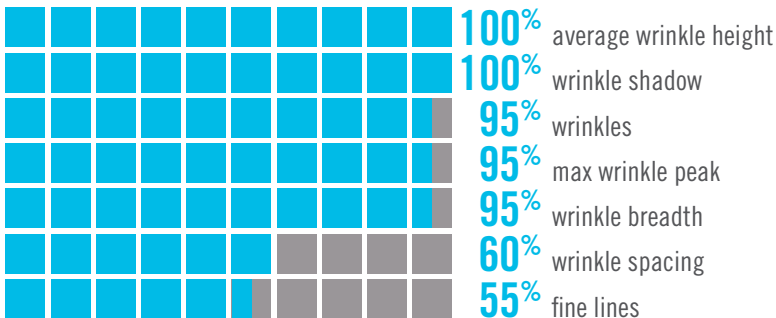
- Conditions the skin's surface using micro-exfoliating tips
- Increases appearance of firmness and elasticity
- Reduces the appearance of fine lines and wrinkles
- Improves skin texture and minimizes the appearance of pores with a proprietary blend of retinol and peptides



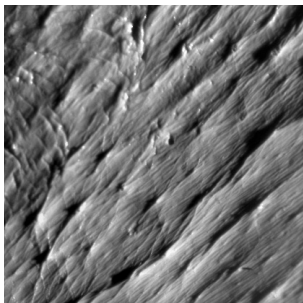
REDEFINE Results

After eight weeks of REDEFINE Regimen and AMP MD System use, participants in an independent clinical study achieved the following results:*

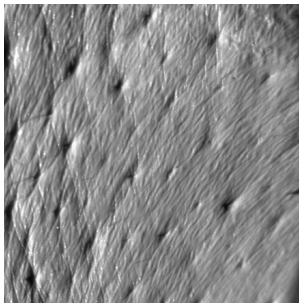
PERCENT OF PARTICIPANTS EXPERIENCING AN IMPROVEMENT IN THE APPEARANCE OF:



BEFORE TREATMENT**



AFTER TREATMENT**



**Results may vary depending on multiple factors: age, gender, skin type and condition, concomitant products used, health history, location, lifestyle and diet.*

***Skin replicas of crow's feet.*

Using AMP MD System nightly with the REDEFINE Regimen



1

REDEFINE Daily Cleansing Mask

Creamy, kaolin clay-based cleansing mask dries in two minutes, drawing impurities from pores without robbing skin of essential moisture. Finely granulated exfoliators gently smooth the skin without disrupting skin's delicate moisture barrier.



2

REDEFINE Pore Minimizing Toner

Exclusive combination of pore-tightening ingredients minimizes the appearance of enlarged pores in this fast-acting, alcohol-free liquid vehicle. Gentle poly-hydroxy acids exfoliate pore-clogging dead skin cells while oligosaccharides help reduce the appearance of pores.



AMP Up Your Results

AMP MD System

AMP MD Micro-Exfoliating Roller utilizes stainless steel micro-exfoliating tips to safely condition the uppermost layer of skin and maximize effectiveness of products applied to skin.

+

REDEFINE Night Renewing Serum

Potent, proprietary blend of peptides and retinol visibly improves skin texture and firmness and reduces the appearance of wrinkles. Retinol, favored by dermatologists for decades, improves skin texture and minimizes the appearance of pores. Patented time-release technology increases skin's receptivity throughout the night while reducing potential irritancy.



3 pm

REDEFINE Overnight Restorative Cream

Ultra-hydrating cream replenishes skin's natural moisturizing factors (NMFs) while you sleep for visibly firmer, less-lined looking skin in the morning. Contains clinically shown concentrations of peptides and niacinamide to help minimize the appearance of wrinkles and to help maintain firmer-looking skin. Moisture recycling complex of hyaluronic acid and glycerin helps prevent moisture loss while 12-hour, time-released antioxidants A, C and E help replenish vital skin nutrients.

CARING FOR YOUR AMP MD

After each use, rinse the AMP MD Roller with very warm running water. Twice per week, clean thoroughly using an AMP MD Purification Tablet:

- Fill Cleansing Vial with very warm (not hot) water to marked fill line.
- Snap the handle of the AMP MD Roller into the cap of the cleansing vial.
- Drop one Purification Tablet into water and immediately immerse the AMP MD Roller, making sure the head is fully submerged.
- When blue color fades, after approximately 15 minutes, remove the AMP MD Roller and rinse thoroughly under very warm running water. Discard used solution. Do not allow the AMP MD Roller to remain in purification solution overnight.

RESPECT THE MICRO-EXFOLIATING TIPS

The AMP MD Roller is constructed of the highest quality micro-exfoliating tips. Always store your roller in the clear storage case or snapped into the cap of the Cleansing Vial. Do not place the roller head directly on hard surfaces or counter tops.

To maintain maximum results, it is recommended to replace your roller after 12 months of daily use.

Getting Started

For best results:

- Use REDEFINE Regimen as instructed twice daily.
- Each evening, after cleansing and toning, use the AMP MD Micro-Exfoliating Roller followed by the Night Renewing Serum. Finish with the Overnight Restorative Cream.
- Start by using the AMP MD Micro-Exfoliating Roller three nights per week and increase to every night as tolerated.
- The AMP MD Micro-Exfoliating can also be used with the REVERSE Regimen after ramping up to using REVERSE Regimen twice daily.

How Do You Roll?

- Divide face into sections (forehead, right side, left side, chin and neck) and with moderate and comfortable pressure, roll AMP MD Micro-Exfoliating Roller over each section 4-10 times, changing directions with each pass, as illustrated:



- After rolling, apply contents of one REDEFINE Night Renewing Serum capsule to entire face and neck to help fortify the skin.

For additional information and answers to frequently asked questions, please visit [RF Connection at www.rodanandfields.com/rfconnection](http://www.rodanandfields.com/rfconnection).

Disclaimer: The information in this brochure is not intended to be used as a substitute for medical advice.

© 2016 Rodan & Fields, LLC. All rights reserved. 6000-02-0561